



The complete solution for the hearing health of professionals exposed to noise



## COTRAL Micra 3D®

Customised hearing protection made of Crylit®

3D digital manufacture based on ear impressions

5-year guarantee

COTRAL Micra 3D® protection, made of Crylit®, are manufactured in 3D based on a scan of the impressions taken at your site by your COTRAL Prevention Technician. The digital manufacturing means that you benefit from customised protection with a precision of 100 microns for unparalleled comfort. These protections are positioned as close as possible to the auditory canal for greater discretion and ease of use.

The impressions are digitally managed in the laboratory to simplify your management and organisation of your renewals.

### For 6 you key points

- The ear impressions for each employee are taken at your company, according to your needs.
- Information is given to raise employee's awareness of the risks of noise during the impression taking.
- Simple maintenance to ensure that your protections remain effective and comfortable to wear.
- ATAG+ to select the filter according to your hearing ability, your environment and your function...
- Maintenance and monitoring of the efficacy of your acoustic filters for 100% safety.
- The possibility to manage your fleet of protections online.

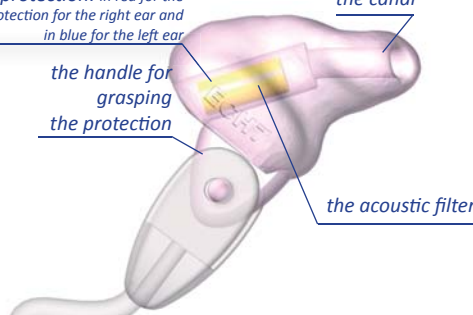
### Description

the alphanumerical code written on the protection: in red for the protection for the right ear and in blue for the left ear

the handle for grasping the protection

the canal

the acoustic filter



### Your guarantees

- Your protections are **certified** according to standard EN 352-2:2003.
- Your protections are **guaranteed** for **5 years** (refer to the recommendations of use).
- An after-sales service at **www.cotral.co.uk "customer area"** or by telephone at **+33 (0) 2 31 69 05 13**.

### You will appreciate.....



**AUDITOOLS:** An online bow with free downloadable documents at [www.cotral.co.uk](http://www.cotral.co.uk) for hearing health management

The **efficacy test** for the INTRA-EAR protections: **CAPA®**

You can check the insertion loss of the hearing protections worn by each of your employees. Need more information about this test? Contact us at +33 (0) 2 31 69 36 36.





# COTRAL Micra 3D®

3D customised hearing protection made of Crylit®

8 certified models

SNR between 20 and 32 dB

## The acoustic filters

High-pitched sounds become harmful at 85 dB(A) and more, low-pitched sounds from 100 dB(A) upwards. The most sensitive frequencies are between 2000 Hz and 6000 Hz with a maximum at 4000 Hz.

Directly incorporated in the protection, the XS filter completely fulfil the needs for protection in an industrial environment. They offer marked attenuation at high frequencies and less attenuation at medium and low frequencies.

### 8 models are certified

(standard NF EN 352-2:2003).

*It is essential for the protection to reduce noise to below the regulatory thresholds without the attenuation's being excessively high. One should not ignore the significance of communication and the need to hear warning signals.*

Source: standard EN 458

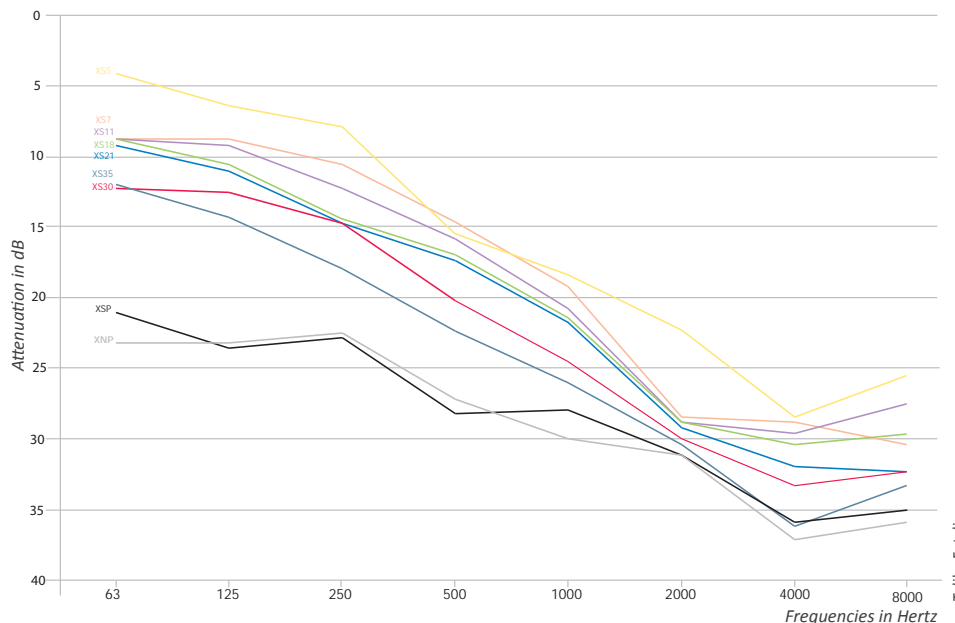
## Choice of the filters

Each technician uses the ATAG+ analysis method. Developed by Laboratoire COTRAL, it allows selection of the filters according to the LEQ (mean intensity for 8 hours of exposure), the low and high frequencies, the wearing habits and the hearing losses of each user.

Choose the COTRAL Micra 3D® protection that you need

		63 Hz	125 Hz	250 Hz	500 Hz	1000 Hz	2000 Hz	4000 Hz	8000 Hz	HML (dB)	SNR(dB)
XS5	Mf (dB)	9,6	10,6	12,3	18,9	23,4	28,3	32,1	32,8	H	23,5
	Sf (dB)	5,2	4,1	4,3	3,3	5,0	5,8	3,8	7,0	M	17,0
	APVf (dB)	4,3	6,4	8,0	15,6	18,3	22,4	28,4	25,8	L	11,1
XS7	Mf (dB)	13,6	13,5	15,1	19,7	25,9	32,9	33,8	37,5	H	26,1
	Sf (dB)	4,9	5,0	4,5	4,9	6,7	4,7	5,2	7,0	M	18,1
	APVf (dB)	8,7	8,5	10,5	14,8	19,2	28,2	28,6	30,4	L	13,1
XS11	Mf (dB)	13,0	13,4	17,1	20,4	25,8	33,1	34,7	33,1	H	27,0
	Sf (dB)	4,4	4,4	4,8	4,4	4,9	4,3	5,2	5,8	M	19,5
	APVf (dB)	8,6	9,0	12,3	16,0	20,9	28,8	29,4	27,3	L	14,3
XS18	Mf (dB)	16,1	17,1	19,2	22,9	27,8	33,1	35,2	37,0	H	27,6
	Sf (dB)	7,2	6,5	4,9	5,8	6,4	4,3	4,8	7,3	M	20,6
	APVf (dB)	8,9	10,6	14,3	17,0	21,4	28,8	30,5	29,7	L	15,9
XS21	Mf (dB)	15,7	16,4	18,9	22,4	26,8	32,4	36,0	36,4	H	28,3
	Sf (dB)	6,6	5,5	4,3	5,0	5,0	3,2	4,1	4,1	M	20,9
	APVf (dB)	9,1	10,9	14,6	17,3	21,8	29,2	31,9	32,3	L	16,3
XS30	Mf (dB)	18,2	17,9	20,2	25,4	29,6	34,2	38,6	37,2	H	30,2
	Sf (dB)	6,0	5,5	5,5	5,1	4,7	4,2	5,4	4,9	M	23,1
	APVf (dB)	12,1	12,4	14,7	20,3	24,8	30,0	33,2	32,3	L	17,4
XS35	Mf (dB)	17,5	19,3	21,3	27,8	31,3	35,7	39,1	36,5	H	31,0
	Sf (dB)	5,5	5,1	3,5	5,5	5,7	5,3	2,9	3,4	M	24,9
	APVf (dB)	11,9	14,1	17,8	22,3	25,7	30,4	36,1	33,1	L	19,7
XSP	Mf (dB)	26,7	28,8	27,6	33,6	33,2	35,3	40,2	40,6	H	32,1
	Sf (dB)	5,4	5,1	4,7	5,4	5,3	4,3	4,3	5,6	M	28,7
	APVf (dB)	21,3	23,6	22,8	28,2	27,9	31,1	35,9	35,0	L	25,8
XNP	Mf (dB)	26,7	27,7	26,9	31,1	34,6	35,6	40,9	40,9	H	32,8
	Sf (dB)	4,7	4,5	4,3	3,7	4,6	4,5	3,8	5,0	M	29,4
	APVf (dB)	23,0	23,2	22,6	27,4	30,0	31,1	37,1	35,9	L	25,7

Mf (dB) : Affaiblissement - Dämmung - gemiddelde demping - average attenuation  
 Sf (dB) : Ecart type - Standardabweichung - standaard afwijking - standard deviation  
 APVf (dB) : Mf - Sf



**Laboratoire COTRAL**  
 BP100 14110 CONDE SUR NOIREAU  
 ☎ +33 (0) 2 31 69 36 36  
 ☎ +33 (0) 2 31 69 36 35  
 www.cotral.com

**Labor COTRAL**  
 Lebacher Straße 4 D-66113 SAARBRÜCKEN  
 ☎ +49 (0)6 81 9963 637  
 ☎ +49 (0)6 81 9963 621  
 www.cotral.de

**Laboratorium COTRAL**  
 8 Avenue des Arts B-1210 BRUXELLES  
 ☎ + 32 (0)2 545 11 52  
 ☎ +32 (0)2 545 11 46  
 www.cotral.be

**Labor COTRAL**  
 Bahnhofstrasse 52 CH-8001 ZÜRICH  
 ☎ +41 (0)44 214 67 24  
 ☎ +41 (0)44 214 65 19  
 www.cotral.ch



**Laboratoire COTRAL**  
 ZA Charles Tellier  
 F.14110 CONDE SUR NOIREAU